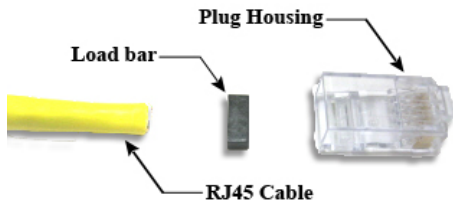
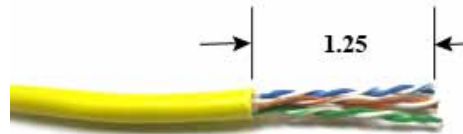


RJ45 TERMINATION INSTRUCTIONS NON-SHIELDED CABLE

COMPONENTS



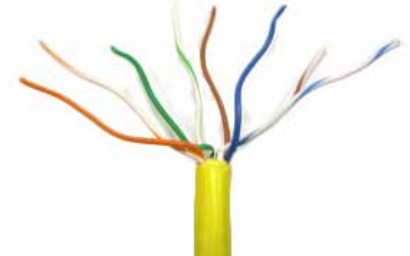
STEP 1:
Strip cable jacket approximately 1¼ inches [31.75mm].



STEP 2:
Organize conductors.



STEP 3:
Maintain twists near the cable jacket.



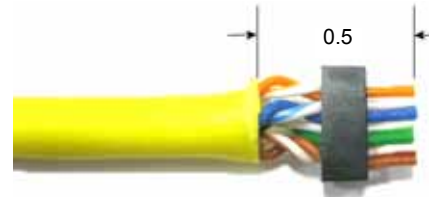
STEP 4:
Flatten conductors, cut the conductors straight, and insert the conductors into the load bar.



STEP 5:
Push the load bar up against the twists.



STEP 6:
Cut the conductors flush to approximately ½ inch [12.7mm].



STEP 7:
Pull the load bar to the end of the conductors.



STEP 8:
Insert the plug housing. Push forward until the conductors engage their openings.



STEP 9:
When the conductors are fully in their openings, the plug is ready to terminate.



STEP 10:
Terminate/crimp the plug with one of the recommended tools (see customer drawing).



TERMINATED PLUG

