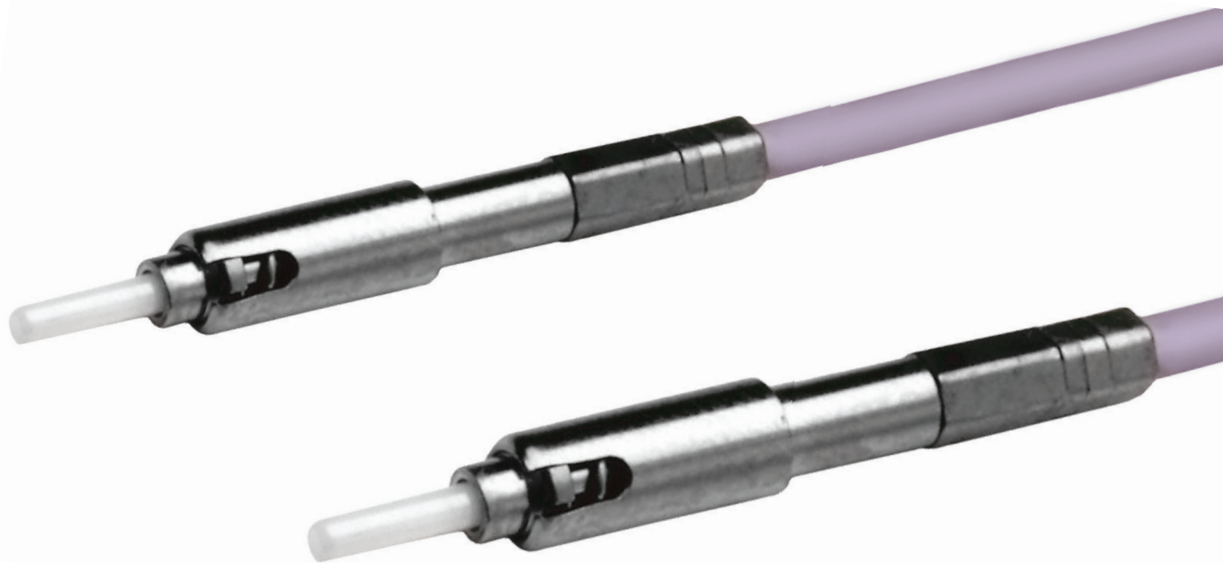


ARINC 801 Technology

High Speed Fiber Optics Single and Multimode



ARINC 801 Technology

Single terminus design for all connector formats

The ARINC 801 fiber optic terminus is the next generation of butt-joint interconnect technology allowing for higher density multichannel connectors to be achieved. With its standard 1.25 mm ferrule and sleeve, the ARINC 801 terminus is designed for both multimode and singlemode applications and is compatible with standard LC termination processes. The terminus is available both as a pull-proof design and a general use design for tight jacketed cable.

For the pull-proof design, the cable jacket is crimped on an external body and a floating mechanism avoids any loss of performance when pulling on the cable. This feature allows for the use of the connector without a backshell.

Standard connector formats include MIL-DTL-38999 type, MIL-DTL-83527 type, ARINC 600 and ARINC 781.



Features & Benefits

Low loss, low back reflection

- Return loss -50 dB singlemode
- Low insertion loss 0.3 dB max mated pair

General use design (no strain relief backshell needed)

Optical disconnect style available

PC, UPC or APC ferrule endface

Genderless design (same contact on both sides of the connector)

Compatible with multimode and singlemode fiber

Standard 1.25 mm ferrule and sleeve

Cable termination identical to LC connector process

Easy cleaning access to the contact through removable alignment sleeve retainer

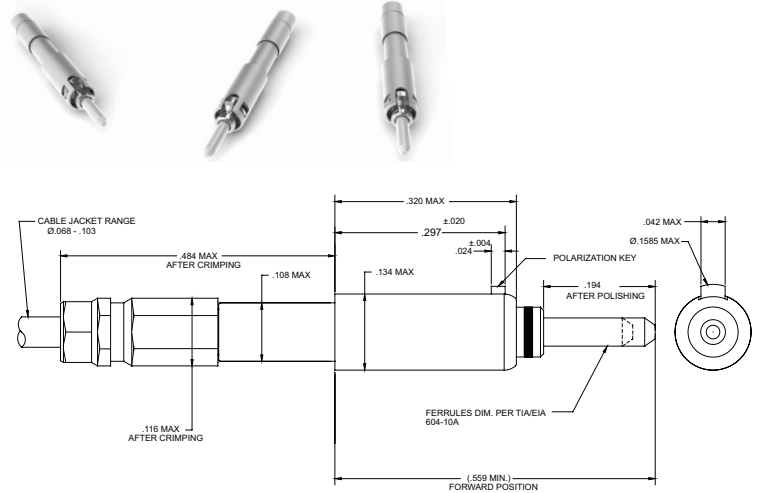
Standard MIL-DTL-38999 and ARINC 600 Size 16 insertion/removal tool

Size 16 ARINC 801 Terminus

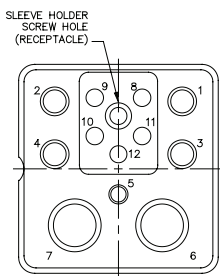
Specifications & Insert Arrangements

Size 16 ARINC 801 Contact

Part Number	Mode	Style	Polish
238500-8000	Multi	Pull Proof Loose Jacket	PC
238500-8001	Multi	Tight Jacket	PC
238500-8002	Single	Pull Proof Loose Jacket	PC
238500-8003	Single	Pull Proof Loose Jacket	APC
238500-8004	Single	Tight Jacket	PC
238500-8005	Single	Tight Jacket	APC

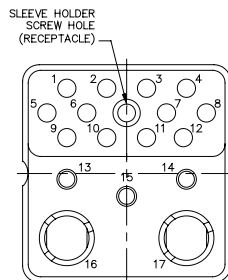


ARINC 600 Insert Arrangements



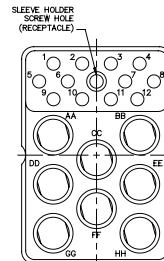
12F5C2

QTY	Size	Contact	Cavity ID
4	12	Electrical	1 to 4
1	16	Electrical	5
2	5	Quadrax	6 to 7
5	16	Optical Termini	8 to 12



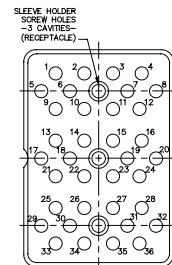
17F12Q2

QTY	Size	Contact	Cavity ID
12	16	Optical Termini	1 to 12
3	16	Electrical	13 to 15
2	8	Quadrax	16 to 17



20F12T8/20F12Q8

QTY	Size	Contact	Cavity ID
12	16	Optical Termini	1 to 12
8	8	Twinax/Quadrax	AA to HH



36F36

QTY	Size	Contact	Cavity ID
36	16	Optical Termini	1 to 36

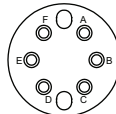
MIL-DTL-38999 Insert Arrangements



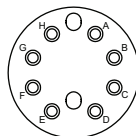
SIZE 11
11-02



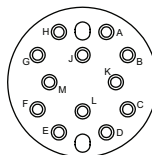
SIZE 13
13-04



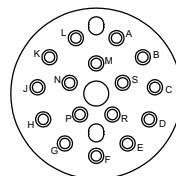
SIZE 15
15-06



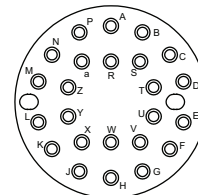
SIZE 17
17-08



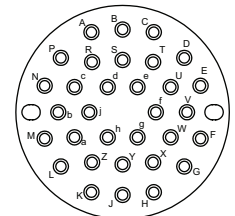
SIZE 19
19-12



SIZE 21
21-16



SIZE 23
23-24

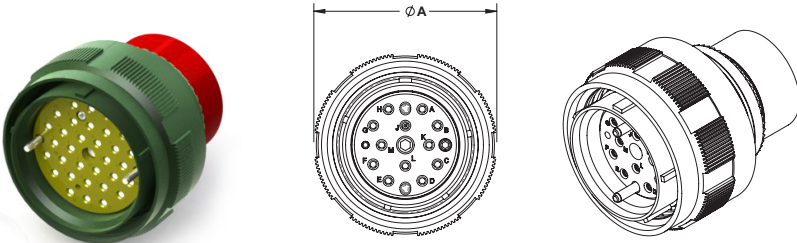


SIZE 25
25-32

Connector Shells

Specifications & Dimensions

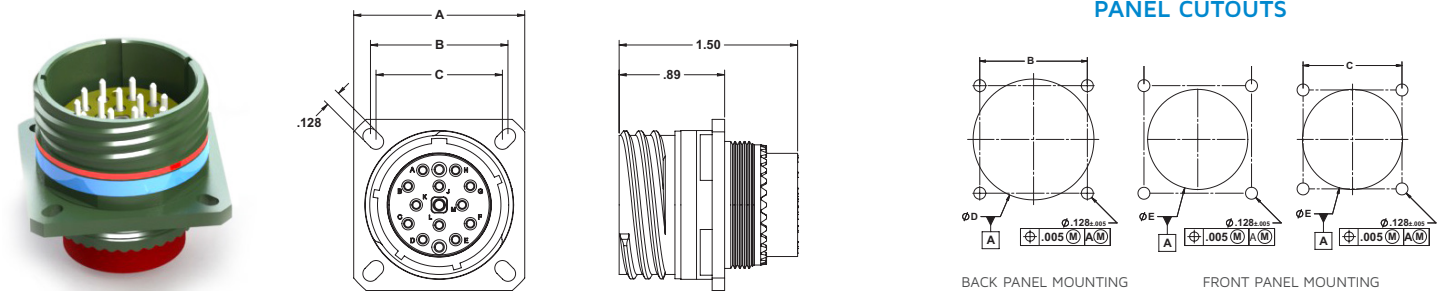
MIL-DTL-38999 Plug



PART NUMBER* Olive Drab Cadmium	PART NUMBER* Electroless Nickel	POLARIZATION	SIZE	CONTACTS	INSERT	A MAX (inches)
236400-2064-X	236400-2030-X	N, A, B, C, D, E	11	2	11-02	0.984
236400-2047-X	236400-2000-X	N, A, B, C, D, E	13	4	13-04	1.157
236400-2033-X	236400-2008-X	N, A, B, C, D, E	15	6	15-06	1.280
236400-2017-X	236400-2046-X	N, A, B, C, D, E	17	8	17-08	1.406
236400-2048-X	236400-2018-X	N, A, B, C, D, E	19	12	19-12	1.516
236400-2062-X	236400-2031-X	N, A, B, C, D, E	21	16	21-16	1.642
236400-2049-X	236400-2045-X	N, A, B, C, D, E	23	24	23-24	1.768
236400-2063-X	236400-2035-X	N, A, B, C, D, E	25	32	25-32	1.890

*-X denotes polarization. Ex: 236400-2064-C for Plug, Size 11, O.D. Cadmium Plated, C Polarization

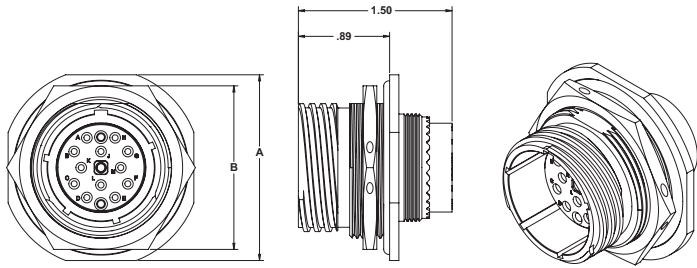
MIL-DTL-38999 Flange Mount Receptacle



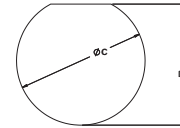
PART NUMBER* Olive Drab Cadmium	PART NUMBER* Electroless Nickel	POLARIZATION	SIZE	CONTACTS	INSERT	A (inches)	B (inches)	C (inches)	D Min (inches)	E Min (inches)
236400-3062-X	236400-3049-X	N, A, B, C, D, E	11	2	11-02	1.031	0.812	0.719	0.796	0.625
236400-3063-X	236400-3000-X	N, A, B, C, D, E	13	4	13-04	1.126	0.906	0.812	0.922	0.750
236400-3038-X	236400-3013-X	N, A, B, C, D, E	15	6	15-06	1.220	0.969	0.906	1.047	0.906
236400-3064-X	236400-3052-X	N, A, B, C, D, E	17	8	17-08	1.311	1.062	0.969	1.219	1.016
236400-3079-X	236400-3022-X	N, A, B, C, D, E	19	12	19-12	1.437	1.156	1.062	1.297	1.141
236400-3080-X	236400-3026-X	N, A, B, C, D, E	21	16	21-16	1.563	1.250	1.156	1.422	1.266
236400-3066-X	236400-3023-X	N, A, B, C, D, E	23	24	23-24	1.689	1.375	1.250	1.547	1.375
236400-3067-X	236400-3053-X	N, A, B, C, D, E	25	32	25-32	1.811	1.500	1.375	1.672	1.484

*-X denotes polarization. Ex: 236400-3062-N for Flange Mount Receptacle, Size 11, O.D. Cadmium Plated, N Polarization

MIL-DTL-38999 Jam Nut Receptacle



PANEL CUTOUTS

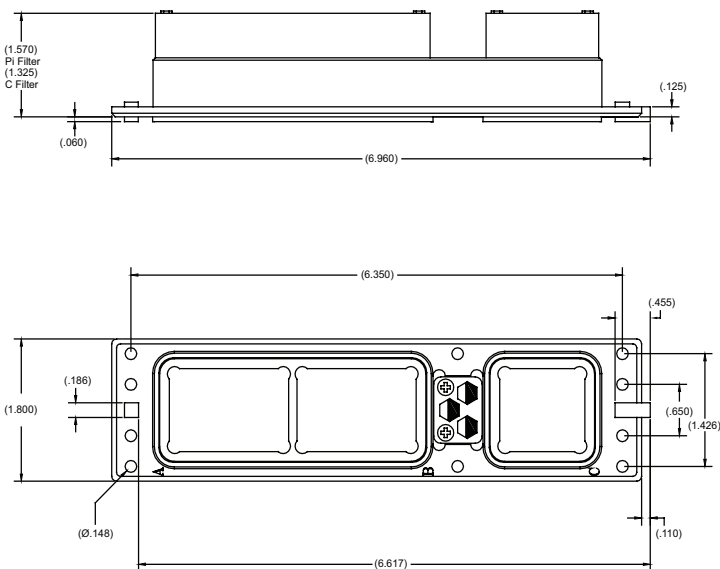


PART NUMBER* Olive Drab Cadmium	PART NUMBER* Electroless Nickel	POLARIZATION	SIZE	CONTACTS	INSERT	A (inches)	B Max (mm)	C (+0.01, -0.00) (inches)	D Min (+0.00 -0.003) (inches)
236400-3081-X	236400-3025-X	N, A, B, C, D, E	11	2	11-02	1.252	27	0.825	0.771
236400-3082-X	236400-3032-X	N, A, B, C, D, E	13	4	13-04	1.374	32	1.010	0.945
236400-3083-X	236400-3051-X	N, A, B, C, D, E	15	6	15-06	1.500	36	1.135	1.085
236400-3084-X	236400-3011-X	N, A, B, C, D, E	17	8	17-08	1.626	37	1.260	1.210
236400-3065-X	236400-3034-X	N, A, B, C, D, E	19	12	19-12	1.811	41	1.385	1.335
236400-3085-X	236400-3006-X	N, A, B, C, D, E	21	16	21-16	1.937	46	1.510	1.460
236400-3086-X	236400-3037-X	N, A, B, C, D, E	23	24	23-24	2.063	50	1.635	1.585
236400-3087-X	236400-3040-X	N, A, B, C, D, E	25	32	25-32	2.189	51	1.760	1.710

*-X denotes polarization. Ex: 236400-3081-N for Jam Nut Receptacle, Size 11, O.D. Cadmium Plated, N Polarization

ARINC 600 Shell Size 2

Please consult factory for ordering information



Global Support

UK Headquarters

- London, UK
+44 20 7004 1600
info.uk@smithsinterconnect.com

US Headquarters

- Stuart, FL
+1 772 286 9300
info.us@smithsinterconnect.com

Americas

- Costa Mesa, CA
+1 714 371 1100
info.us@smithsinterconnect.com
- Milpitas, CA
+1 408 957 9607 x-1125
info.us@smithsinterconnect.com
- Stuart, FL
+1 772 286 9300
info.us@smithsinterconnect.com
- Hudson, MA
+1 978 568 0451
info.us@smithsinterconnect.com
- Northampton, MA
+1 413 582 9620
info.northamptonsmithsinterconnectinc.com
- Tampa, FL
+ 1 813 901 7200
info.tampa@smithsinterconnectinc.com
- Kansas City, KS
+1 913 342 5544
info.us@smithsinterconnect.com
- Salisbury, MD
+1 800 780 2169
info.us@smithsinterconnect.com
- Thousand Oaks, CA
+1 805 267 0100
info.thousandoaks@smithsinterconnectinc.com

Europe

- Deggendorf, Germany
+49 991 250 120
info.de@smithsinterconnect.com
- Genova, Italy
+39 0 10 60361
info.it@smithsinterconnect.com
- Dundee, UK
+44 1382 427 200
info.dundee@smithsinterconnect.com
- Rouen, France
+33 2 32 96 91 76
info.fr@smithsinterconnect.com
- Elstree, UK
+44 20 8236 2400
info.uk@smithsinterconnect.com

Asia

- Shanghai, China
+86 21 3318 4650
asiainfo@smithsinterconnect.com
- Suzhou, China
+86 512 6273 1188
asiainfo@smithsinterconnect.com
- Singapore
+65 6846 1655
asiainfo@smithsinterconnect.com

more > [smithsinterconnect.com](https://www.smithsinterconnect.com)

