



**DLF0723 / DLH0723**

**7" TFT LCD, LED Backlight 600nits,1024x600**

7" TFT LCD panel, built-in 600 nits high bright for sunlight readable LCD display, high transmittance color filter, high transmission polarizing plates, Low Power Consumption, suitable for kiosk, advertising, POS, marine, transportation, gaming, studio display, gas pump.

**Key Features**

- Sunlight Readable
- LED Backlight
- High Shock & Vibration Resistance
- Low Power Consumption
- Wide Operation Temperature. (-20°C ~ 70°C)
- High Uniformity
- Low EMI Noise
- Wide Dimming
- Life Expectancy (70,000hrs)



**Specifications**

Preliminary

Model No.	DLF0723	DLH0723
Description	7" TFT LCD, LED Backlight 600 nits, 1024x600	
Display Area (mm)	153.6(H)×90(V)	
Brightness	600 cd/m <sup>2</sup>	
Resolution	1024 x 600	
Contrast Ratio	400 : 1	
Pixel Pitch (mm)	0.15 x 0.15	
Viewing Angle	140°(H), 110°(V)	
Display Colors	262,144 colors	
Response Time (Typical)	20 ms	
Sync	LVDS	
Power Consumption	3.2W	
Dimensions (mm)	165 x 102 x 4.9	
Weight (Net)	270g	
LED Driving Board	LID 07B01	
Control Board (Optional)	<input type="checkbox"/> AD5621GA <input type="checkbox"/> AD5621GD <input type="checkbox"/> AD5766GDVA <input type="checkbox"/> AD2662GDVAR	
	<input type="checkbox"/> AD5621GA	VGA+Audio
	<input type="checkbox"/> AD5621GD	VGA+DVI
	<input type="checkbox"/> AD2662GDVAR	VGA+DVI (Optional S-Video/ Component / Audio)
F / R Control Button	<input type="checkbox"/> 5 Key <input type="checkbox"/> 4 Key	
	<input type="checkbox"/> 5 Key	Power Switch, Menu, Select (+,-), Auto
	<input type="checkbox"/> 4 Key	Power Switch, Menu, Select (+,-),
OSD Menu	Brightness, Contrast, H/V Position, Color, Phase, Clock...	
Optional	<input type="checkbox"/> AOT <input type="checkbox"/> Touch Screen	

Specifications are subject to change without notice.

All brands or product names are trademarks or registered trademarks of their respective companies.

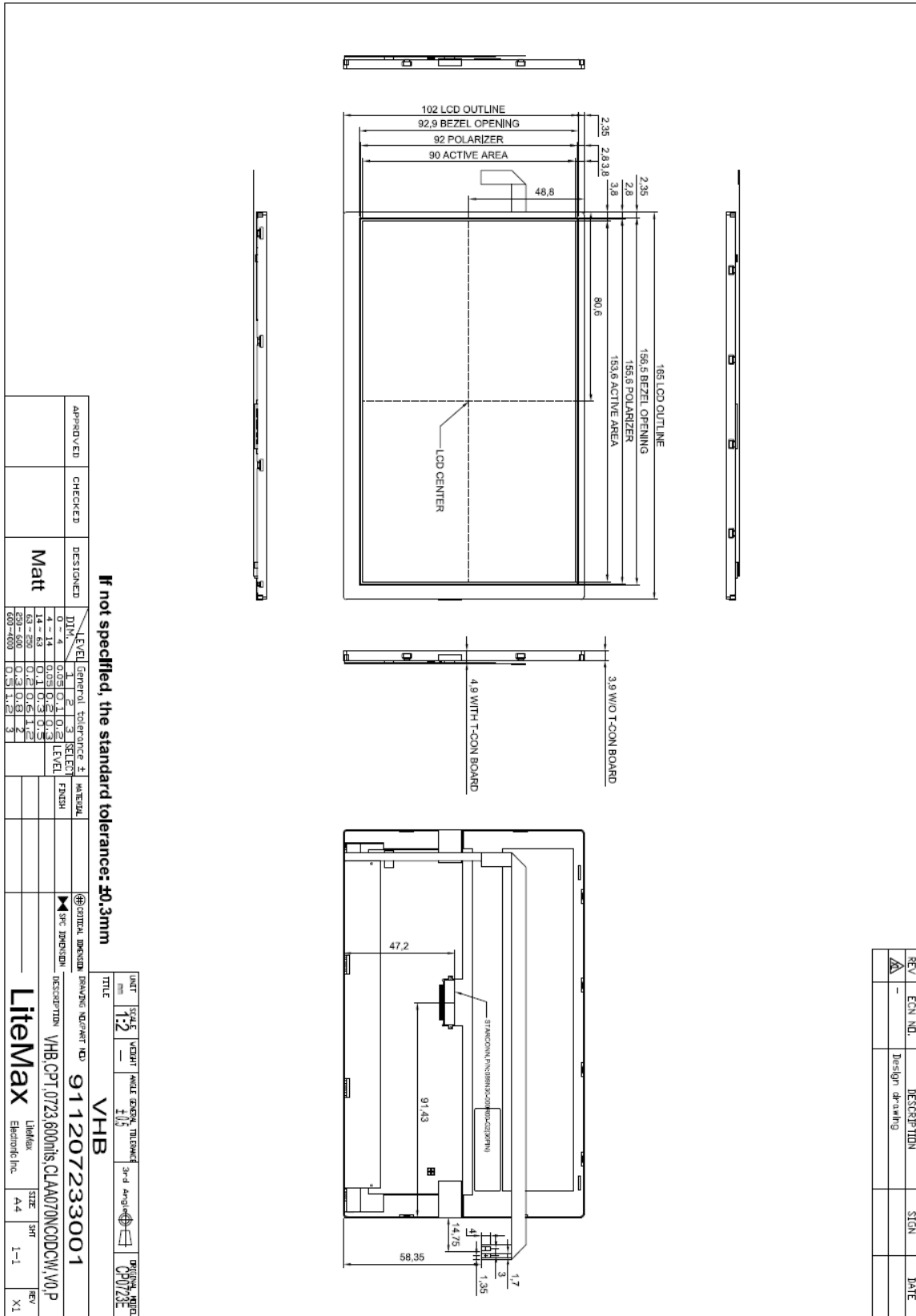
**DLF**= Panel+LED Driving Board

**DLH**= Panel+LED Driving Board+Control Board



# Mechanical Drawing

Outline Dimensions Unit:mm





### Ordering Information

Model Name	Description

### Optional Accessories

Part Number	Description