

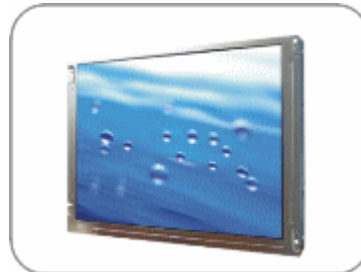


## DLF1055 / DLH1055 10.4" TFT LCD, LED Backlight 800nits,XGA

10.4" TFT LCD panel, built-in 800 nits high bright for sunlight readable LCD display, high transmittance color filter, high transmission polarizing plates, Low Power Consumption, suitable for kiosk, advertising, POS, marine, transportation, gaming, studio display, gas pump.

### Key Features

- Sunlight Readable
- LED Backlight
- High Shock & Vibration Resistance
- Low Power Consumption
- Wide Operation Temp. (-20°C~60°C)
- High Uniformity (90%)
- Low EMI Noise
- Wide Dimming
- Life Expectancy (70,000hrs)



### Specifications

V1

Model No.	DLF1055	DLH1055
Description	10.4" TFT LCD, LED Backlight 800nits,XGA	
Display Area (mm)	210.4 x 157.8 mm	
Brightness	800 cd/m <sup>2</sup>	
Resolution	1024 x 768 (XGA)	
Contrast Ratio	1200 : 1	
Pixel Pitch (mm)	0.0685(H) x 0.2055(V)	
Viewing Angle	+88°~-88°(H), +88°~-88°(V)	
Display Colors	16.2M	
Response Time (Typical)	40ms (Typical)	
Sync	LVDS	
Power Consumption	16.2W	
Dimensions (mm)	238.1x173x13	
Weight (Net)	650g	
LED Driving Board	LID 12A	
Control Board (Optional)	<input type="checkbox"/> AD5621GA <input type="checkbox"/> AD5621GD <input type="checkbox"/> AD5766GDVA <input type="checkbox"/> AD2662GDVAR	
	<input type="checkbox"/> AD5621GA	VGA+Audio
	<input type="checkbox"/> AD5621GD	VGA+DVI
	<input type="checkbox"/> AD5766GDVA	VGA+CVBS+S-Video+Audio (Optional DVI / Component)
	<input type="checkbox"/> AD2662GDVAR	VGA+DVI (Optional S-Video/ Component / Audio)
F / R Control Button	<input type="checkbox"/> 5 Key <input type="checkbox"/> 4 Key	
	<input type="checkbox"/> 5 Key	Power Switch, Menu, Select (+,-), Auto
	<input type="checkbox"/> 4 Key	Power Switch, Menu, Select (+,-),
OSD Menu	Brightness, Contrast, H/V Position, Color, Phase, Clock...	
Optional	<input type="checkbox"/> AOT <input type="checkbox"/> Touch Screen	

Specifications are subject to change without notice.

All brands or product names are trademarks or registered trademarks of their respective companies.

DLF= Panel+LED Driving Board

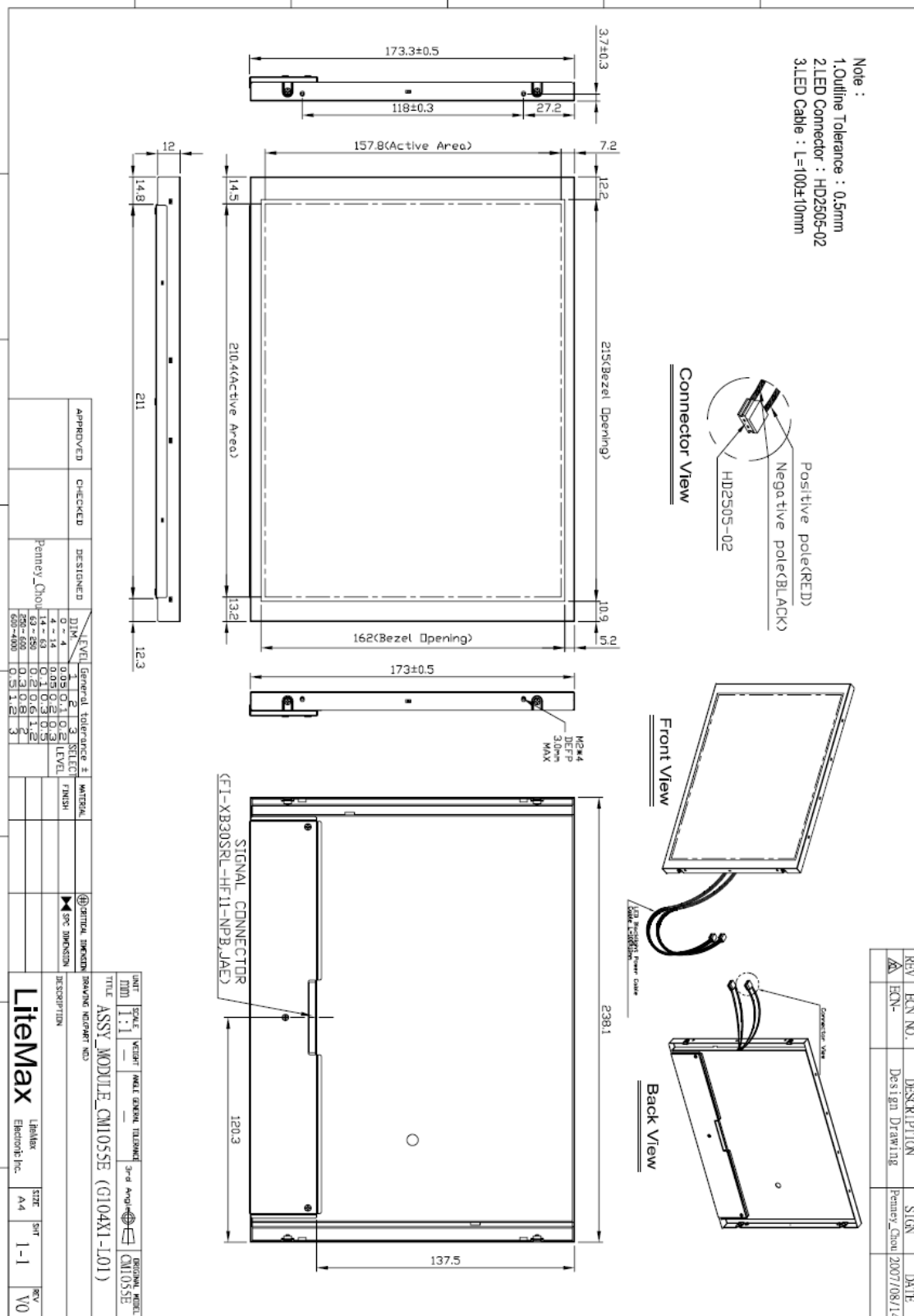
DLH= Panel+LED Driving Board+Control Board



## Mechanical Drawing

**Outline Dimensions**

Unit:mm



## Ordering Information

Part Number	Description
-------------	-------------



<b>DLF1055-ENN-A01</b>	10.4", 800nits, XGA.LID12A, v01
<b>DLH1055-ENN-A01</b>	10.4", 800nits, XGA.LID12A, AD5621GA, v01
<b>DLH1055-ENN-B01</b>	10.4", 800nits, XGA,LID12A.AD5621GD,V01
<b>DLH1055-ENN-B02</b>	10.4", 800nits, XGA.LID12A, AD5621GD, v02
<b>DLH1055-ENN-C01</b>	10.4", 800nits, XGA.LID12A, AD5766GDV, V01
<b>OLF1055-ETN-A01</b>	10.4",800nits.XGA,T/TI-Res-5W.LID12A01,AOT-V1,V01

### Optional Accessories

Part Number	Description
<b>840612051100</b>	ADAPTER.12V.5A.60W.EA1050A,P
<b>810618301010</b>	CABLE.POWER.AC.1830mm USA type
<b>810618301090</b>	CABLE,POWER,AC,1830mm Europe type
<b>810618301050</b>	CABLE.POWER.AC.1830mm UK type
<b>810618301170</b>	CABLE.POWER,AC,1830mm Australia type
<b>810618301030</b>	CABLE.POWER.AC.1830mm Japan type