



SLD 0835

8.4" TFT LCD Monitor, LED Backlight 1000nits,SVGA

SLD0835 TFT LCD monitor, built-in 1000 nits high brightness for sunlight readable display. It offers the best visibility, performance and cost effective value. The high level of brightness together with the optimal contrast ratio renders high quality images and enhances legibility. With its fast response time and LED backlight technology, the monitor brings remarkable display quality and durability for your applications. Suitable for marine, military, medical, transportation, and industrial application.

Key Features

- Sunlight Readable
- LED Backlight
- High Shock & Vibration Resistance
- Low Power Consumption
- Wide Temperature. Range (-20°C~60°C)
- High Uniformity (90%)
- Low EMI Noise
- Wide Dimming
- Life Expectancy (70,000hrs)

Applications

Marine, Military,
Medical, Transportation
Industrial



Specifications

V1

Model No.	SLD0835
Description	8.4" TFT LCD monitor, LED Backlight 1000 nits, SVGA
Display Area (mm)	170.4x127.8 mm
Brightness	1,000 cd/m ²
Resolution	800 x600 (SVGA)
Contrast Ratio	600 : 1
Pixel Pitch (mm)	0.213(H) x 0.213(V)
Viewing Angle	+60°~-60°(H), +65°~-55°(V)
Display Colors	16.2M
Response Time (Typical)	30ms (Typical)
Power Input	DC-12V
Power Consumption	12W
Dimensions (mm)	241x171x44.7
Weight (Net)	1.7kg
Control Board (Optional)	<input type="checkbox"/> AD5621GA <input type="checkbox"/> AD5621GD <input type="checkbox"/> AD5766GDVA <input type="checkbox"/> AD2662GDVAR
<input type="checkbox"/> AD5621GA	VGA+Audio
<input type="checkbox"/> AD5621GD	VGA+DVI
<input type="checkbox"/> AD5766GDVA	VGA+CVBS+S-Video+Audio (Optional DVI / Component)
<input type="checkbox"/> AD2662GDVAR	VGA+DVI (Optional S-Video/ Component / Audio)
F / R Control Button	<input type="checkbox"/> 5 Key <input type="checkbox"/> 4 Key
<input type="checkbox"/> 5 Key	Power Switch, Menu, Select (+,-), Auto
<input type="checkbox"/> 4 Key	Power Switch, Menu, Select (+,-),
OSD Menu	Brightness, Contrast, H/V Position, Color, Phase, Clock...
Optional	<input type="checkbox"/> AOT <input type="checkbox"/> Touch Screen <input type="checkbox"/> Waterproof

Specifications are subject to change without notice.

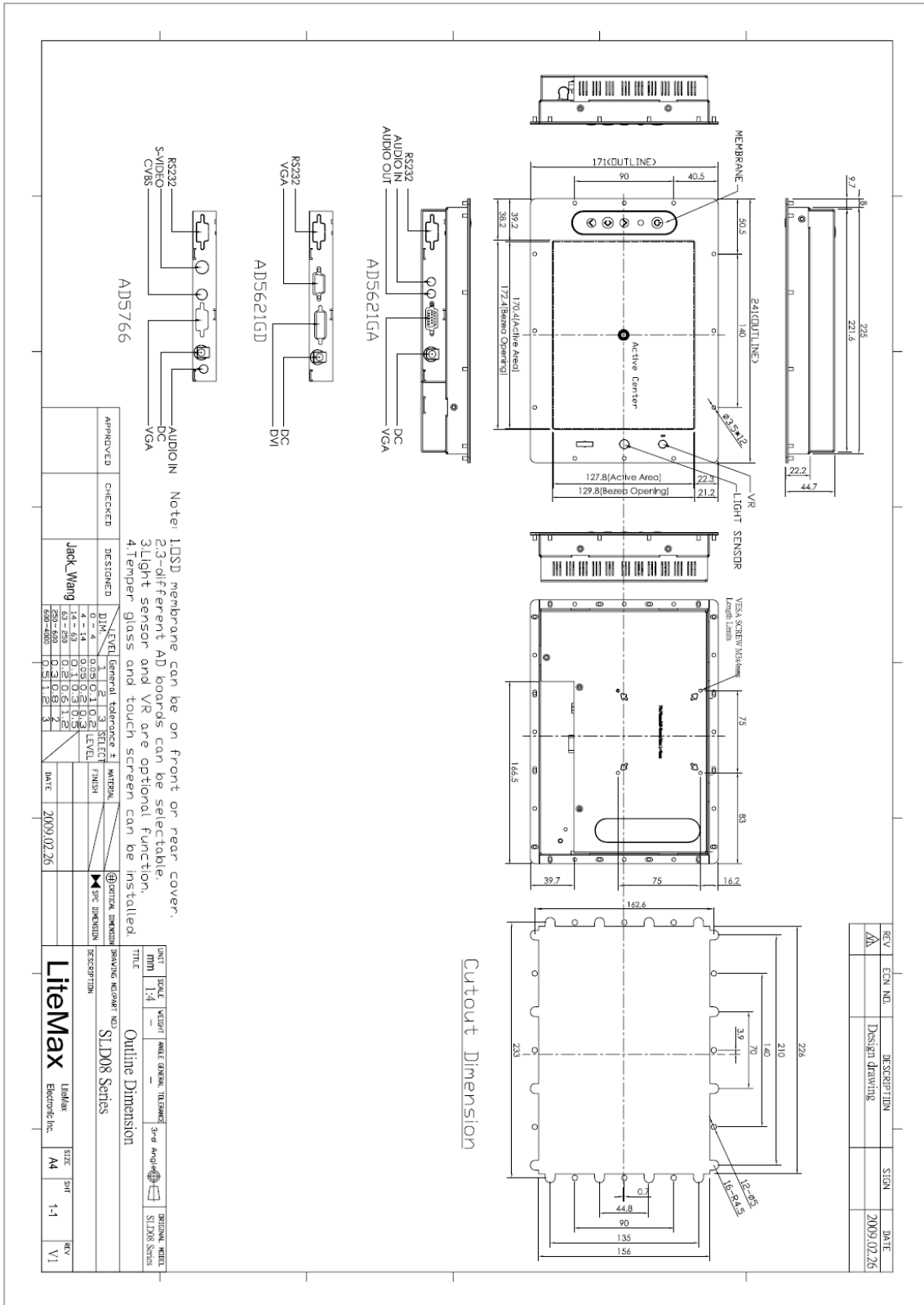
All brands or product names are trademarks or registered trademarks of their respective companies.



Mechanical Drawing

Outline Dimensions

Unit:mm



APPROVED	CHECKED	DESIGNED	DATE
		Jack_Wang	2009.02.26

REV	ECN NO.	DESCRIPTION	SIGN	DATE
A/1		Design drawing		2009.02.26

UNIT: mm	SCALE: 1:1	DATE: 2009.02.26	3-D: Angled	REGION: CHINA
DRAWING NUMBER: SLD08 Series				
DESCRIPTION: Outline Dimension				
BROWNING NUMBER: SLD08 Series				
MATERIAL: <input checked="" type="checkbox"/> DIMENSION				
FINISH: <input checked="" type="checkbox"/> DIMENSION				
Lithemax Lighter Electronic Inc.				
SIZE: A4	SHR: 1-1	REV: V1		



Ordering Information

Part Number	Description
SLD0835-EGA-C01	8.4",1000nits,SVGA,AR glass.O/F,AD5766GDV,V01
SLD0835-ENA-A01	8.4",1000nits,SVGA.O/F,AD5621G,V01
SLD0835-ETB-B01	8.4",1000nits,SVGA.T/LY-R-5W-USB,O/B,AD5621GD,V01

Optional Accessories

Part Number	Description
840612051100	ADAPTER.12V.5A.60W.EA1050A,P
810618301010	CABLE.POWER.AC.1830mm USA type
810618301090	CABLE,POWER,AC,1830mm Europe type
810618301050	CABLE.POWER.AC.1830mm UK type
810618301170	CABLE.POWER,AC,1830mm Australia type
810618301030	CABLE.POWER.AC.1830mm Japan type