



SLD 4215 42" Wide TFT LCD Monitor, 1000nits, WXGA

SLD4215 wide TFT LCD monitor, built-in 1000 nits high brightness for sunlight readable display. It offers the best visibility, performance and cost effective value. The high level of brightness together with the optimal contrast ratio renders high quality images and enhances legibility. With its fast response time and backlight technology, the monitor brings remarkable display quality and durability for your applications. Suitable for marine, military, medical, transportation, and industrial application.

Key Features

- Sunlight Readable
- Wide Viewing Angle
- High Contrast Ratio
- Long Lamp Life
- Fast Response Time
- Thin and Light

Applications

Marine, Military,
Medical, Transportation
Industrial



Specifications

V1

| | |
|--------------------------------------|--|
| Model No. | SLD4215 |
| Description | 42" Wide TFT LCD Monitor, 1000 nits, WXGA |
| Display Area (mm) | 930.25 x 530.01mm |
| Brightness | 1000 cd/m ² |
| Resolution | 1366x768 (WSXGA) |
| Contrast Ratio | 1500 : 1 |
| Pixel Pitch (mm) | 0.681(H) x 0.681 (V) |
| Viewing Angle | +89°~-89°(H), +89°~-89°(V) |
| Display Colors | 16.7M |
| Response Time (Typical) | 20ms |
| Power Input | AC 100V~240V |
| Power Consumption | 245W |
| Dimensions (mm) | 967x558.6x86.6 |
| Weight (Net) | 35Kg |
| Control Board (Optional) | <input type="checkbox"/> AD5621GA <input type="checkbox"/> AD5621GD <input type="checkbox"/> AD5766GDVA <input type="checkbox"/> AD2662GDVAR |
| <input type="checkbox"/> AD5621GA | VGA+Audio |
| <input type="checkbox"/> AD5621GD | VGA+DVI |
| <input type="checkbox"/> AD5766GDVA | VGA+CVBS+S-Video+Audio (Optional DVI / Component) |
| <input type="checkbox"/> AD2662GDVAR | VGA+DVI (Optional S-Video/ Component / Audio) |
| F / R Control Button | <input type="checkbox"/> 5 Key <input type="checkbox"/> 4 Key |
| <input type="checkbox"/> 5 Key | Power Switch, Menu, Select (+,-), Auto |
| <input type="checkbox"/> 4 Key | Power Switch, Menu, Select (+,-), |
| OSD Menu | Brightness, Contrast, H/V Position, Color, Phase, Clock... |
| Optional | <input type="checkbox"/> AOT <input type="checkbox"/> Touch Screen <input type="checkbox"/> Waterproof |

Specifications are subject to change without notice.

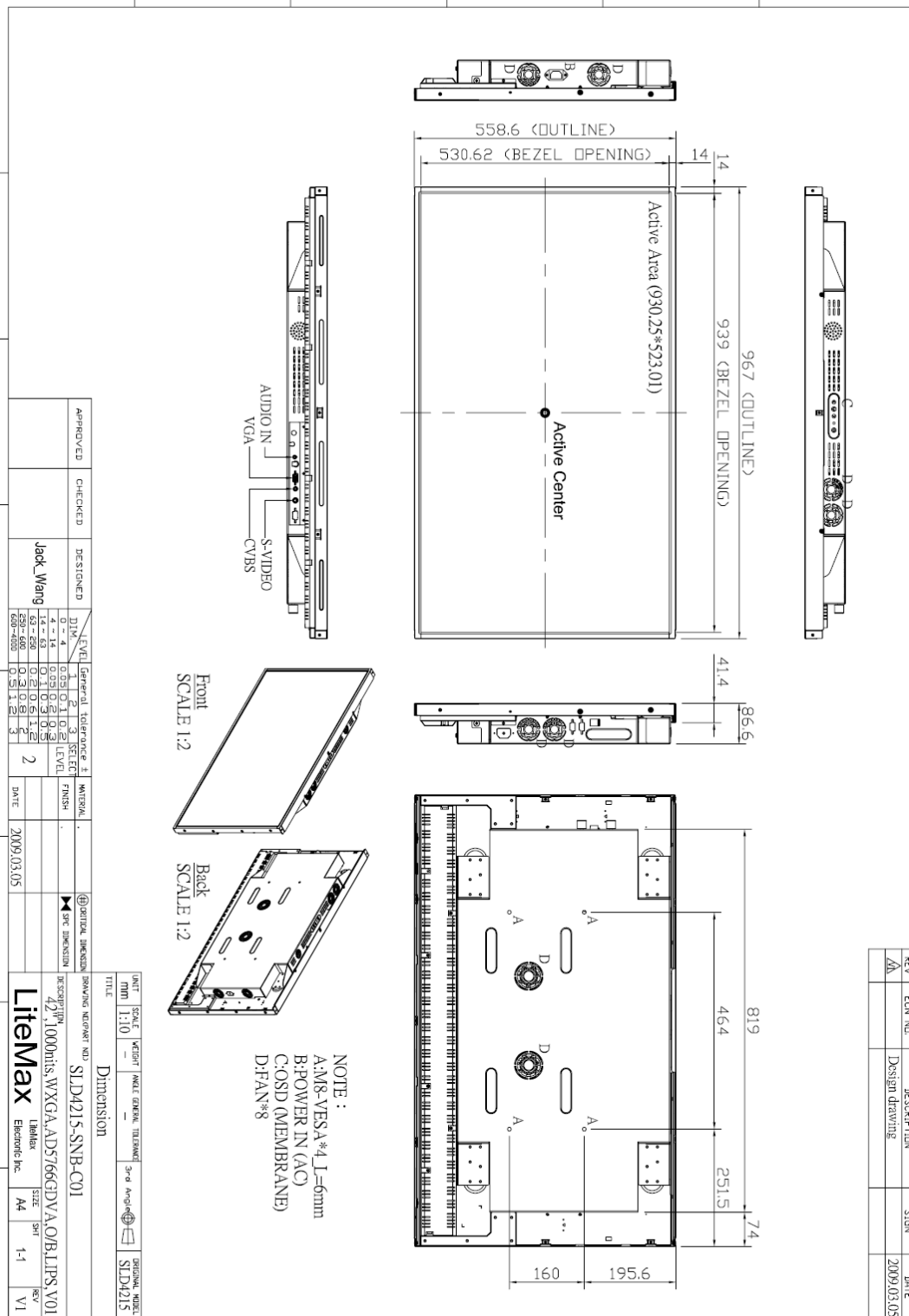
All brands or product names are trademarks or registered trademarks of their respective companies.



Mechanical Drawing

Outline Dimensions

Unit:mm





Ordering Information

| Part Number | Description |
|-----------------|--|
| SLD4215-SNB-C01 | 42",1000nits,WXGA,AD57GDVA.O/B,LIPS,V01 |
| SLD4215-SNB-D01 | 42",1000nits,WXGA.AD5766+IO1501,O/B,LIPS,V01 |
| | |

Optional Accessories

| Part Number | Description |
|--------------|--------------------------------------|
| 810618301010 | CABLE.POWER.AC.1830mm USA type |
| 810618301090 | CABLE,POWER,AC,1830mm Europe type |
| 810618301050 | CABLE.POWER.AC.1830mm UK type |
| 810618301170 | CABLE.POWER,AC,1830mm Australia type |
| 810618301030 | CABLE.POWER.AC.1830mm Japan type |