



SLD2115

21.5" Wide TFT LCD, LED Backlight 1000nits,FHD (1920x1080)

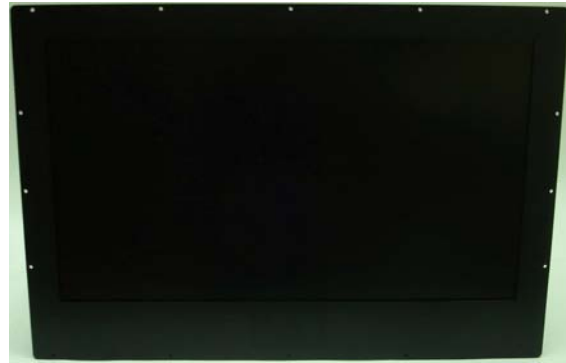
21.5" wide is a full high definition (FHD) LCD panel, built-in 1000 nits high bright for sunlight readable LCD display, high transmittance color filter, high transmission polarizing plates, Low Power Consumption, suitable for kiosk, advertising, POS, marine, transportation, gaming, studio display, gas pump.

Key Features

- Sunlight Readable
- LED Backlight
- High Shock & Vibration Resistance
- Low Power Consumption
- High Uniformity
- Low EMI Noise
- Wide Dimming
- Life Expectancy (70,000hrs)

Applications

Marline, Military,
Medical, Transportation
Industrial



Specifications

V1

Model No.	SLD2115
Description	21.5" Wide TFT LCD, LED Backlight 1000 nits, FHD
Display Area (mm)	476.64 (H) x 268.11(V)
Brightness	1,000 cd/m ²
Resolution	1920 x 1080 (FHD)
Contrast Ratio	1000 : 1
Pixel Pitch (mm)	0.24825(H) x 0.24825(V)
Viewing Angle	170°(H), 160°(V)
Display Colors	16.7M colors
Response Time (Typical)	5 ms
Sync	LVDS
Power Consumption	20.5W
Dimensions (mm)	545(W) x 370(H) x 61(D)mm
Weight (Net)	6.12 Kg
LED Driving Board	LID 21A01
Control Board (Optional)	<input type="checkbox"/> AD5621GA <input type="checkbox"/> AD5621GD <input type="checkbox"/> AD5766GDVA <input type="checkbox"/> AD2662GDVAR
<input type="checkbox"/> AD5621GA	VGA+Audio
<input type="checkbox"/> AD5621GD	VGA+DVI
<input type="checkbox"/> AD2662GDVAR	VGA+DVI (Optional S-Video/ Component / Audio)
F / R Control Button	<input type="checkbox"/> 5 Key <input type="checkbox"/> 4 Key
<input type="checkbox"/> 5 Key	Power Switch, Menu, Select (+,-), Auto
<input type="checkbox"/> 4 Key	Power Switch, Menu, Select (+,-),
OSD Menu	Brightness, Contrast, H/V Position, Color, Phase, Clock...
Optional	<input type="checkbox"/> AOT <input type="checkbox"/> Touch Screen

Specifications are subject to change without notice.

All brands or product names are trademarks or registered trademarks of their respective companies.

DLF= Panel+LED Driving Board

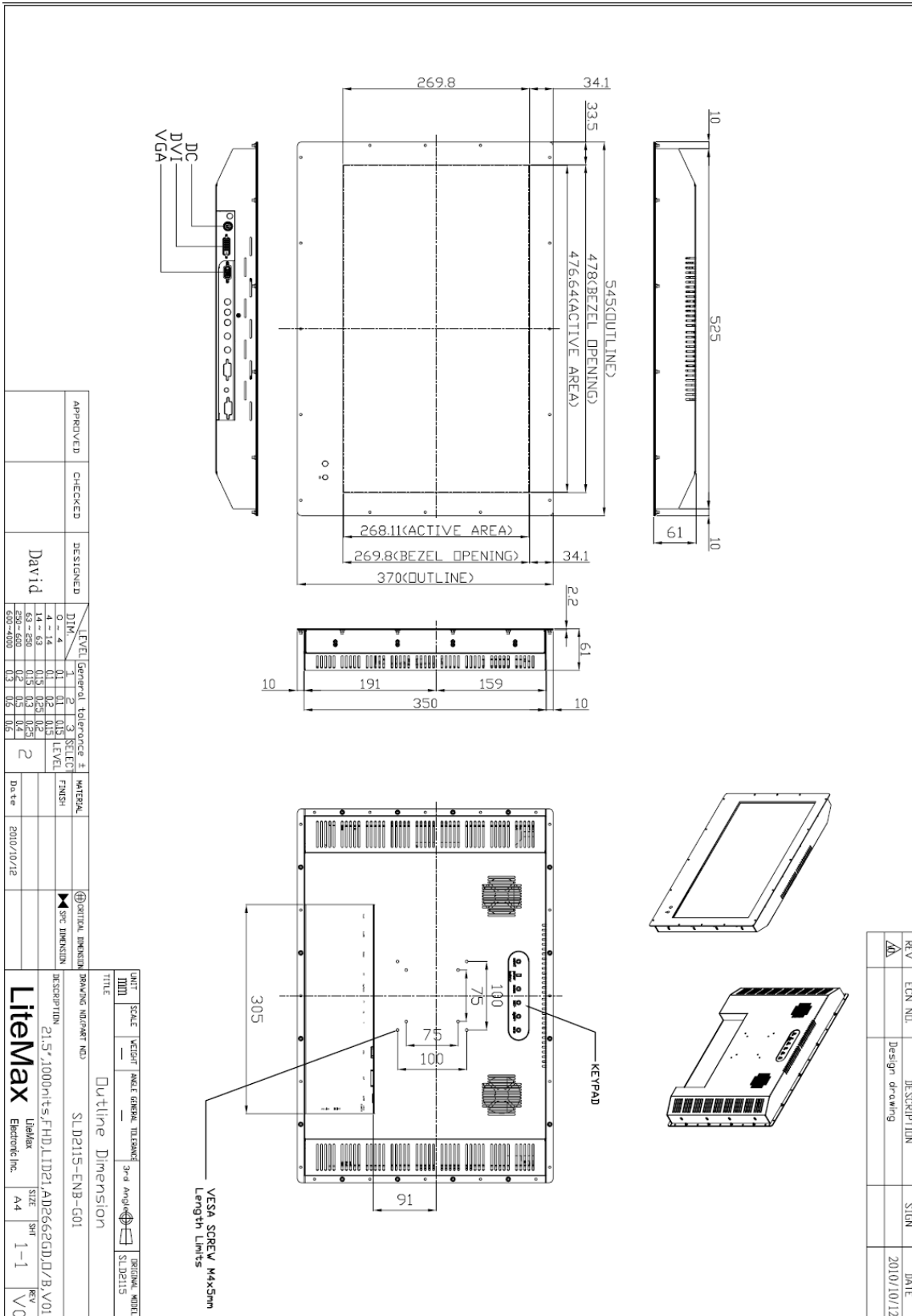
DLH= Panel+LED Driving Board+Control Board



Mechanical Drawing

Outline Dimensions

Unit:mm





Ordering Information

Model Name	Description
SLD2115-ENB-G01	21.5",1000nits,FHD,LID21,AD2662GD,O/B,V01

Optional Accessories

Part Number	Description
980000460010	SET.OTHER,ADAPTER REWORK.60W PAA060F WITH.POWER DIN 4pin lock,P
810618301010	CABLE.POWER.AC.1830mm USA type
810618301090	CABLE,POWER,AC,1830mm Europe type
810618301050	CABLE.POWER.AC.1830mm UK type
810618301170	CABLE.POWER,AC,1830mm Australia type
810618301030	CABLE..POWER.AC.1830mm Japan type