



SLO-0835

8.4" Open Frame Monitor, LED Backlight 1000nits,SVGA

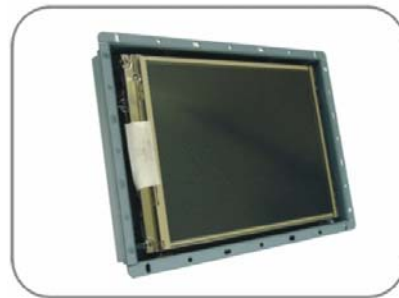
SLO-0835 open frame LCD display, built-in 1000 nits high brightness for sunlight readable application. Features wide operating temperature, high brightness, AOT optical bonding, touch screen capable, and customized mechanical design; fulfill the demand for extreme environments. It offers the best visibility, performance and cost effective value. The high level of brightness together with fast response time and LED backlight technology, the monitor brings remarkable display quality. And guaranteeing product life cycle longevity, stability, and reliability. Perfectly suitable for kiosk, ATM, POS, marine, military, medical, transportation, and outdoor industrial application.

Key Features

- Sunlight Readable
- LED Backlight
- High Shock & Vibration Resistance
- Low Power Consumption
- Wide Temperature. Range (-20°C~60°C)
- High Uniformity (90%)
- Touch Screen (Optional)
- VESA mounting 70/100

Applications

Marine, Military,
Medical, Transportation
Industrial



Specifications

V1

Model No.	SLO-0835
Description	8.4" Open Frame Monitor, LED Backlight 1000 nits, SVGA
Display Area (mm)	170.4x127.8 mm
Brightness	1,000 cd/m ²
Resolution	800 x600 (SVGA)
Contrast Ratio	600 : 1
Pixel Pitch (mm)	0.213(H) x 0.213(V)
Viewing Angle	+60°~-60°(H), +65°~-55°(V)
Display Colors	16.2M
Response Time (Typical)	30ms (Typical)
Power Input	DC 12V
Power Consumption	12W
Dimensions (mm)	241x171x43.7
Weight (Net)	1.4kg
Control Board (Optional)	<input type="checkbox"/> AD5621GA <input type="checkbox"/> AD5621GD <input type="checkbox"/> AD2662GDVAR
<input type="checkbox"/> AD5621GA	VGA + Audio
<input type="checkbox"/> AD5621GD	VGA+DVI
<input type="checkbox"/> AD5766GDVA	VGA+CVBS+S-Video + Audio (Optional DVI / Component)
<input type="checkbox"/> AD2662GDVAR	VGA+DVI (Optional S-Video/ Component / Audio)
F / R Control Button	<input type="checkbox"/> 5 Key <input type="checkbox"/> 4 Key
<input type="checkbox"/> 5 Key	Power Switch, Menu, Select (+,-), Auto
<input type="checkbox"/> 4 Key	Power Switch, Menu, Select (+,-),
OSD Menu	Brightness, Contrast, H/V Position, Color, Phase, Clock...
Optional	<input type="checkbox"/> AOT <input type="checkbox"/> Touch Screen <input type="checkbox"/> Waterproof

Specifications are subject to change without notice.

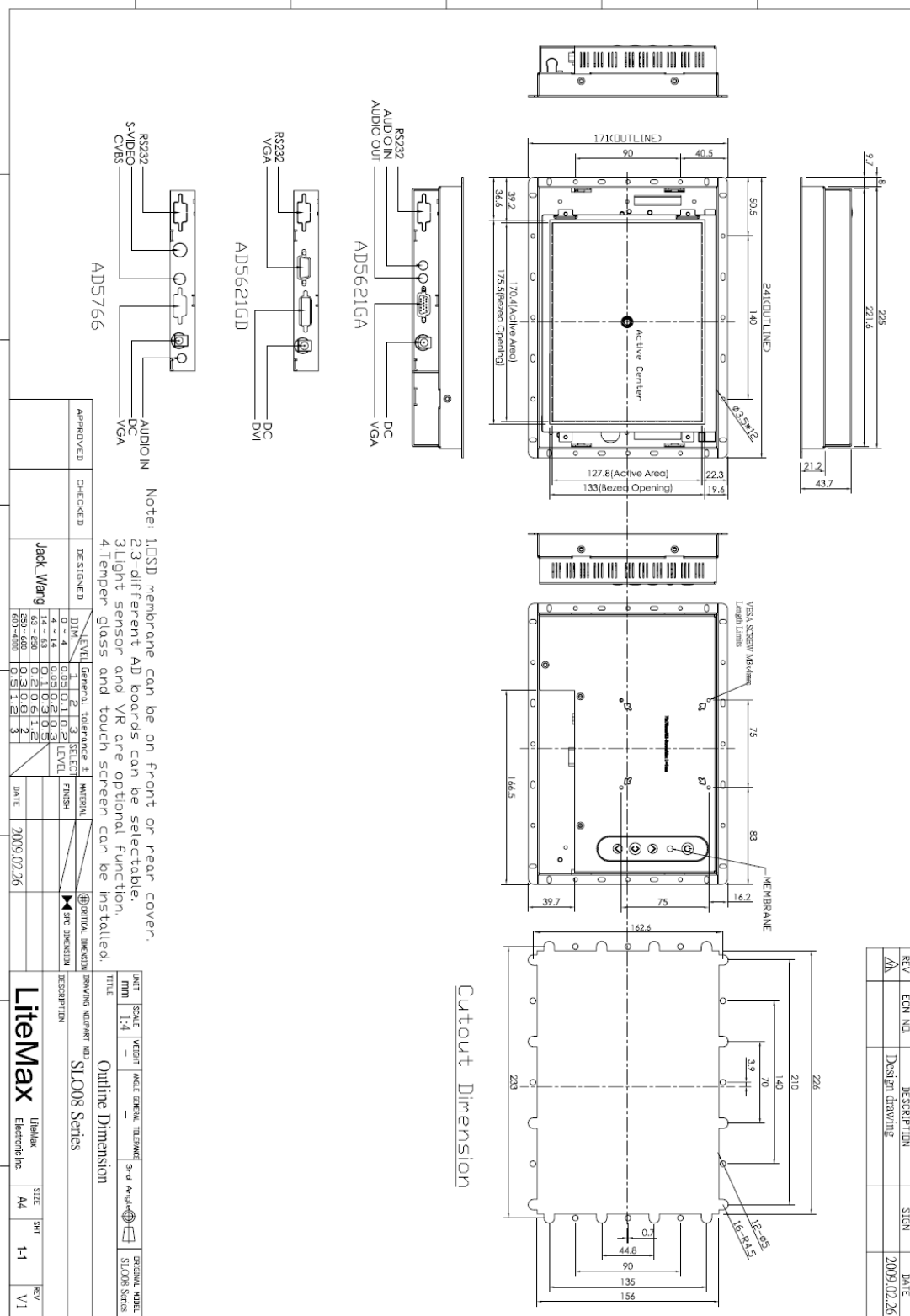
All brands or product names are trademarks or registered trademarks of their respective companies.



Mechanical Drawing

Outline Dimensions

Unit:mm





Ordering Information

Part Number	Description
SLO0835-ENB-A01	8.4",1000nits,SVGA.O/B,AD5621G,V01

Optional Accessories

Part Number	Description
840612051100	ADAPTER.12V.5A.60W.EA1050A,P
810618301010	CABLE.POWER.AC.1830mm USA type
810618301090	CABLE,POWER,AC,1830mm Europe type
810618301050	CABLE.POWER.AC.1830mm UK type
810618301170	CABLE.POWER,AC,1830mm Australia type
810618301030	CABLE.POWER.AC.1830mm Japan type