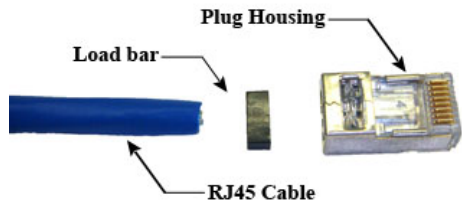
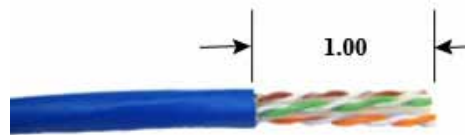


RJ45 TERMINATION INSTRUCTIONS SHIELDED CABLE

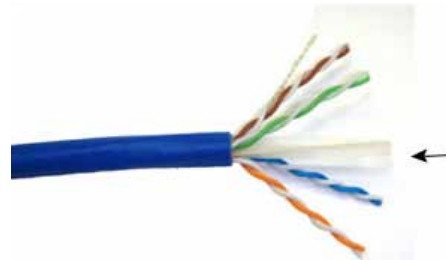
COMPONENTS



STEP 1:
Strip cable jacket, foil shield, and clear tape approximately 1 inch [25.4mm].



STEP 2:
Cut inner insulator down to outer cable jacket.



STEP 3:
Organize conductors and wrap the drain wire around outer cable jacket.



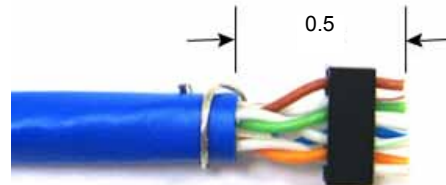
STEP 4:
Maintain the twists near the outer cable jacket.



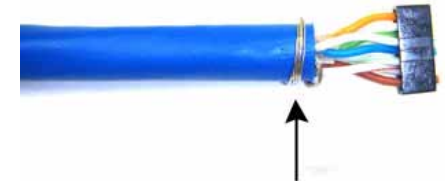
STEP 5:
Push the load bar up against the twists.



STEP 6:
Cut the conductors flush to approximately ½ inch [12.7mm].



STEP 7:
Pull the load bar to the end of the conductors. Optional: For ease of assembly, use a flat nose plier to slightly press onto outer cable jacket.



STEP 8:
Insert the plug housing. Push forward until the conductors engage their openings.



STEP 9:
When the conductors are fully in their openings, the plug is ready to terminate. Adjust the drain wire so that it touches the metal shell of the RJ45 plug.



STEP 10:
Terminate/crimp the plug with one of the recommended tools (see customer drawing).



TERMINATED PLUG

