

Piezo Switches 22mm Stainless Steel

Illuminated and Non Illuminated

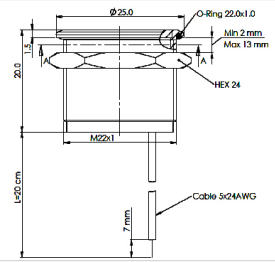


22MM Stainless Steel Non Illuminated



MPZ/022

Non Illumination
20 cm lead
Flathead

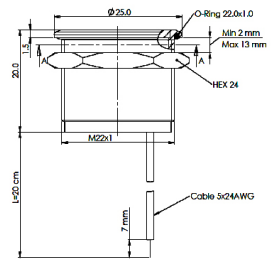


22MM Stainless Steel Illuminated



MPZI/022

Red or Green Illumination
1 colour
20 cm lead
Flathead

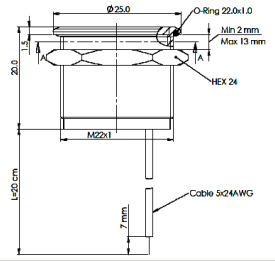


22MM Stainless Steel Illuminated



MPZI/022

Red and Green Illumination
(2 colour)
20 cm lead
Flathead



Specification

MPZ/022, MPZI/022

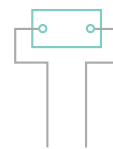
Type	Momentary
Material	Stainless Steel (Aluminium upon request)
Maximum Voltage	24V AC/DC
Switch Resistance "ON"	<1Ω
Switch Resistance "OFF"	5MΩ
Capacitance	100pF
Switching current (momentary)	1A Max
Switching current (prolonged)	300 mA
Switching pulse time (momentary)	up to 0.3 sec
Switching pulse time (prolonged)	up to 6 sec
LED Illumination	24V AC/DC
Actuating force, typically	3-5 N
Life cycle	10 Million

Environmental specs

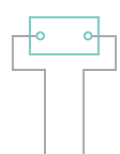
Sealing	IP68; IP69K
Operating temperature	-40°C to +85°C
Vibration Resistances	5-500Hz/9.4m
Shock resistance	75g (g-force)
RoHS compliance	Compliant

Circuit Specification

22MM Stainless Steel Non Illuminated



Switch voltage 24V AC/DC
Switch Current 1A Max
Power Supply 24V AC/DC



Switch voltage 24V AC/DC
Switch Current 1A Max
Colour* Illuminated 24V AC/DC
Power Supply 24V AC/DC