



## SLO0625

### 6.5" Open Frame TFT LCD, LED Backlight 1000nits,VGA(640x480)

SLO0625 is a open frame LCD display, built-in 1000 nits high brightness for sunlight readable application. Features wide operating temperature, high brightness, AOT optical bonding, touch screen capable, and customized mechanical design; fulfill the demand for extreme environments. The high level of brightness together with LED backlight technology, the monitor brings remarkable display quality. And guaranteeing product life cycle longevity, stability, and reliability. Perfectly suitable for kiosk, ATM, POS, military, transportation, and outdoor industrial application.

#### Key Features

- Sunlight Readable
- LED Backlight
- High Shock & Vibration Resistance
- Low Power Consumption
- Wide Temperature. Range
- High Uniformity
- Low EMI Noise
- Wide Dimming
- Life Expectancy
- Operation Temperature: -30°C ~ 80 °C



## Specifications

V2

<b>Model No.</b>	<b>SLO0625</b>	
<b>Description</b>	6.5" Open Frame ,TFT LCD, LED Backlight 1000nits,VGA(640x480)	
<b>Backlight</b>	LED Backlight	
<b>Display Area (mm)</b>	132.48 x 99.36 mm	
<b>Brightness</b>	1,000 cd/m <sup>2</sup>	
<b>Resolution</b>	640 x480 (VGA)	
<b>Contrast Ratio</b>	600 : 1	
<b>Pixel Pitch (mm)</b>	0.207(H) x 0.207(V)	
<b>Viewing Angle</b>	160°(H), 140°(V)	
<b>Display Colors</b>	16.2M colors	
<b>Response Time (Typical)</b>	25ms (Typical)	
<b>Power Consumption</b>	5W	
<b>Dimensions (mm)</b>	172.2x165.2x33.5mm	
<b>Weight (Net)</b>	0.42Kg	
<b>Control Board (Optional)</b>	<input type="checkbox"/> AD5621GM <input type="checkbox"/> AD5621GD <input type="checkbox"/> AD5766GDVA <input type="checkbox"/> AD2662GDVAR	
<input type="checkbox"/> AD5621GM	VGA	
<input type="checkbox"/> AD5621GD	VGA+DVI	
<input type="checkbox"/> AD5766GDVA	VGA+CVBS+S-Video+Audio (Optional DVI )	
<input type="checkbox"/> AD2662GDVAR	VGA+DVI (Optional CVBS / S-Video/ Component / Audio)	
<b>OSD Control Button</b>	<input type="checkbox"/> 5 Key <input type="checkbox"/> 4 Key	
<input type="checkbox"/> 5 Key	Power Switch, Menu, Select (+,-), Auto	
<input type="checkbox"/> 4 Key	Power Switch, Menu, Select (+,-),	
<b>OSD Menu</b>	Brightness, Contrast, H/V Position, Color, Phase, Clock...	
<b>Optional</b>	<input type="checkbox"/> AOT <input type="checkbox"/> Touch Screen <input type="checkbox"/> Waterproof	

*Specifications are subject to change without notice.*

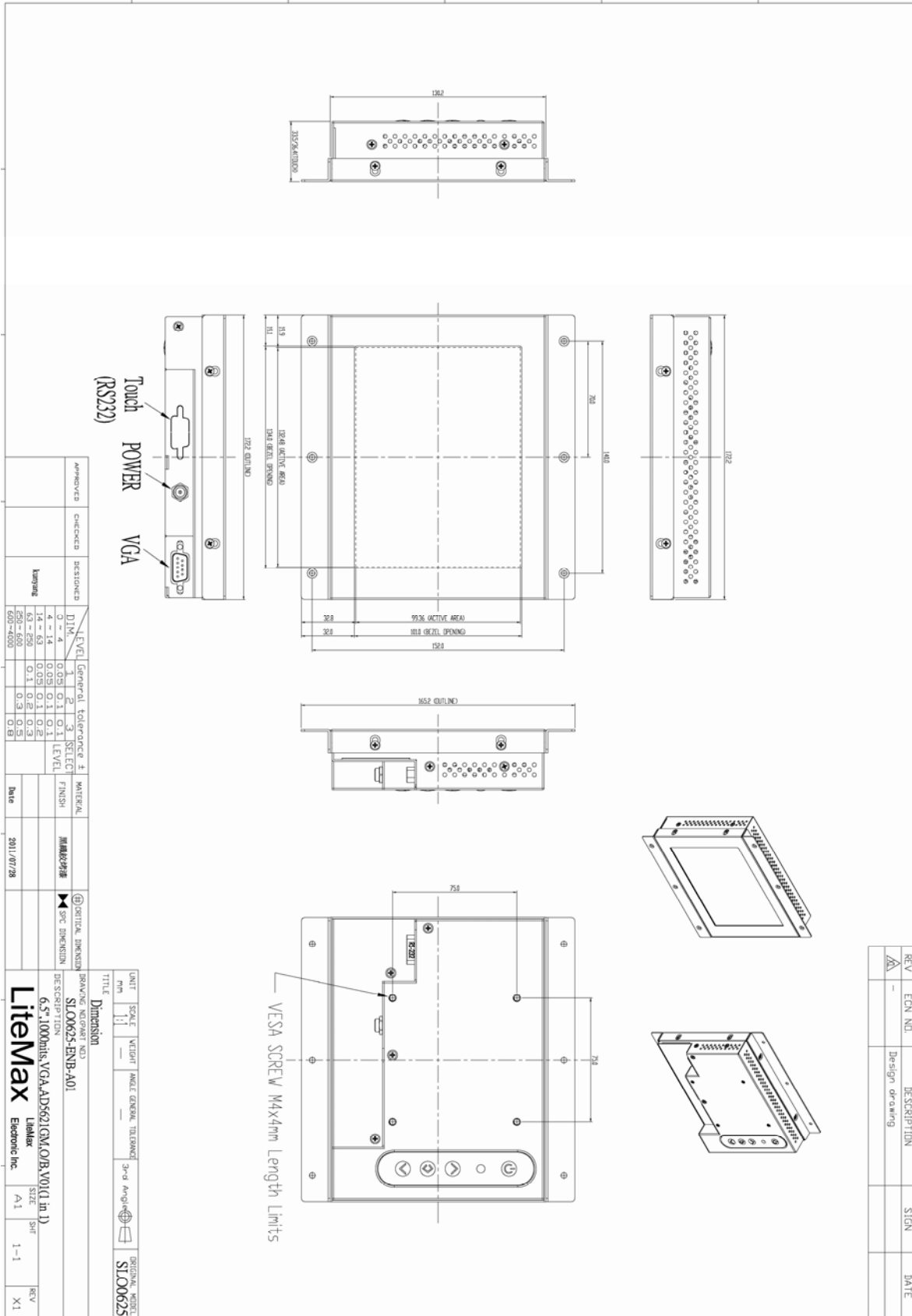
*All brands or product names are trademarks or registered trademarks of their respective companies.*



## Mechanical Drawing

### Outline Dimensions

Unit:mm





### Ordering Information

Part Number	Description
SLO0625-ENB-A01	6.5", 1000nits, AD5621GM, VGA,O/B.V01(1 in 1)

### Optional Accessories

Part Number	Description
840612031100	ADAPTER.12V.3.33A.40W,PAA040F,P
810618301010	CABLE.POWER.AC.1830mm USA type
810618301090	CABLE,POWER,AC,1830mm Europe type
810618301050	CABLE.POWER.AC.1830mm UK type
810618301170	CABLE.POWER,AC,1830mm Australia type
810618301030	CABLE.POWER.AC.1830mm Japan type