



SLM 1531 15" TFT LCD Monitor, XGA

SLM1531 TFT LCD monitor, it offers the best visibility, performance and cost effective value. The monitor brings remarkable display quality and durability for your applications. Suitable for marine, military, medical, transportation, and industrial application.

Key Features

- With 2Wx2 Speaker
- 5-wire resistive touch screen (optional)
- Foldable stand, angle, height adjustment
- Security lock hole
- 75mm VESA mounting

Applications

Marine, Military,
Medical, Transportation
Industrial



Specifications

V1

Model No.	SLM1531
Description	15" TFT LCD Monitor, XGA
Display Area (mm)	304.128 x 228.096mm
Brightness	250 cd/m ²
Resolution	1024x768 (XGA)
Contrast Ratio	700 : 1
Pixel Pitch (mm)	0.297(H) x 0.297(V)
Viewing Angle	140°(H), +120°(V)
Display Colors	16.2M
Response Time (Typical)	8ms
Power Input	DC 12V
Power Consumption	42W
Dimensions (mm)	346x276x49.5
Weight (Net)	2.22Kg
Control Board (Optional)	<input type="checkbox"/> AD5621GA <input type="checkbox"/> AD5621GD <input type="checkbox"/> AD5766GDVA <input type="checkbox"/> AD2662GDVAR
<input type="checkbox"/> AD5621GA	VGA + Audio
<input type="checkbox"/> AD5621GD	VGA+DVI
<input type="checkbox"/> AD5766GDVA	VGA+CVBS+S-Video+Audio (Optional DVI / Component)
<input type="checkbox"/> AD2662GDVAR	VGA+DVI (Optional S-Video/ Component / Audio)
F / R Control Button	<input type="checkbox"/> 5 Key <input type="checkbox"/> 4 Key
<input type="checkbox"/> 5 Key	Power Switch, Menu, Select (+,-), Auto
<input type="checkbox"/> 4 Key	Power Switch, Menu, Select (+,-),
OSD Menu	Brightness, Contrast, H/V Position, Color, Phase, Clock...
Optional	<input type="checkbox"/> AOT <input type="checkbox"/> Touch Screen <input type="checkbox"/> Waterproof

Specifications are subject to change without notice.

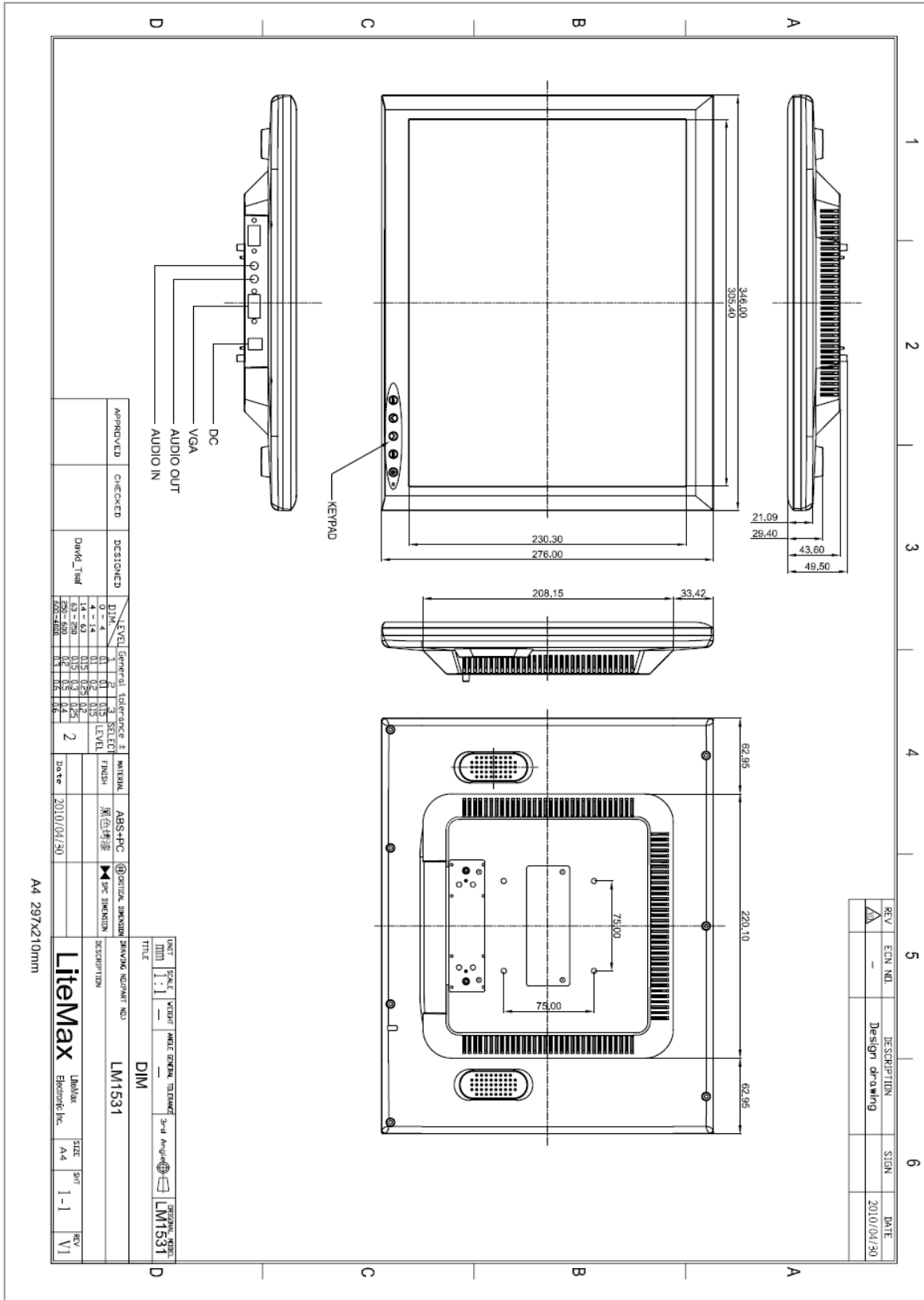
All brands or product names are trademarks or registered trademarks of their respective companies.



Mechanical Drawing

Outline Dimensions

Unit:mm





Ordering Information

Part Number	Description
SLM1531-SNA-A02	15", 250nits, O/F, AD5621GA, black, v01
SLM1531-SNA-A03	15", 250nits, XGA, O/F, Black, UKB, v01
SLM1531-SNA-A04	15", 250nits, XGA, O/F.VGA, black, v02
SLM1531-SNA-A05	15".250nits,XGA,LCD Display.Black,AD5621GA,UKB,V01
SLM1531-SNA-A06	15",250nits,XGA,LCD Display.Black,AD5621G,UKB,V02
SLM1531-STA-A01	15", 250nits, XGA, T/LY-R-4W-RS232, AD5621GA, v01
SLM1531-STA-A03	15", 250nits, T/LY-R-5W-RS232, AD5621GA, v02
SLM1531-STA-A04	15", 250nits, XGA.T/LY-R-5W-RS232, O/F.VGA, black, v03
SLM1531-STA-A05	15", 250nits, XGA.T/LY-R-5W-USB, O/F.VGA, black, v02

Optional Accessories

Part Number	Description
840612031100	ADAPTER.12V.3.33A.40W,PAA040F,P
810618301010	CABLE.POWER.AC.1830mm USA type
810618301090	CABLE,POWER,AC,1830mm Europe type
810618301050	CABLE.POWER.AC.1830mm UK type
810618301170	CABLE.POWER,AC,1830mm Australia type
810618301030	CABLE.POWER.AC.1830mm Japan type