



SLM 1931 19" TFT LCD Monitor, SXGA

SLM1931 TFT LCD monitor, it offers the best visibility, performance and cost effective value. The monitor brings remarkable display quality and durability for your applications. Suitable for marine, military, medical, transportation, and industrial application.

Key Features

- With 2Wx2 Speaker
- 5-wire resistive touch screen (optional)
- Foldable stand, angle, height adjustment
- Security lock hole
- 75mm VESA mounting

Applications

Marine, Military,
Medical, Transportation
Industrial



Specifications

V1

Model No.	SLM1931
Description	19" TFT LCD Monitor, SXGA
Display Area (mm)	376.32 x 301.056mm
Brightness	250 cd/m ²
Resolution	1280x1024 (SXGA)
Contrast Ratio	800 : 1
Pixel Pitch (mm)	0.294(H) x 0.294(V)
Viewing Angle	160°(H), 160°(V)
Display Colors	16.7M
Response Time (Typical)	5ms
Power Input	DC 12V
Power Consumption	63W
Dimensions (mm)	423x351.5x63.7
Weight (Net)	4.1Kg
Control Board (Optional)	<input type="checkbox"/> AD5621GA <input type="checkbox"/> AD5621GD <input type="checkbox"/> AD5766GDVA <input type="checkbox"/> AD2662GDVAR
<input type="checkbox"/> AD5621GA	VGA + Audio
<input type="checkbox"/> AD5621GD	VGA+DVI
<input type="checkbox"/> AD5766GDVA	VGA+CVBS+S-Video+Audio (Optional DVI / Component)
<input type="checkbox"/> AD2662GDVAR	VGA+DVI (Optional S-Video/ Component / Audio)
F / R Control Button	<input type="checkbox"/> 5 Key <input type="checkbox"/> 4 Key
<input type="checkbox"/> 5 Key	Power Switch, Menu, Select (+,-), Auto
<input type="checkbox"/> 4 Key	Power Switch, Menu, Select (+,-),
OSD Menu	Brightness, Contrast, H/V Position, Color, Phase, Clock...
Optional	<input type="checkbox"/> AOT <input type="checkbox"/> Touch Screen <input type="checkbox"/> Waterproof

Specifications are subject to change without notice.

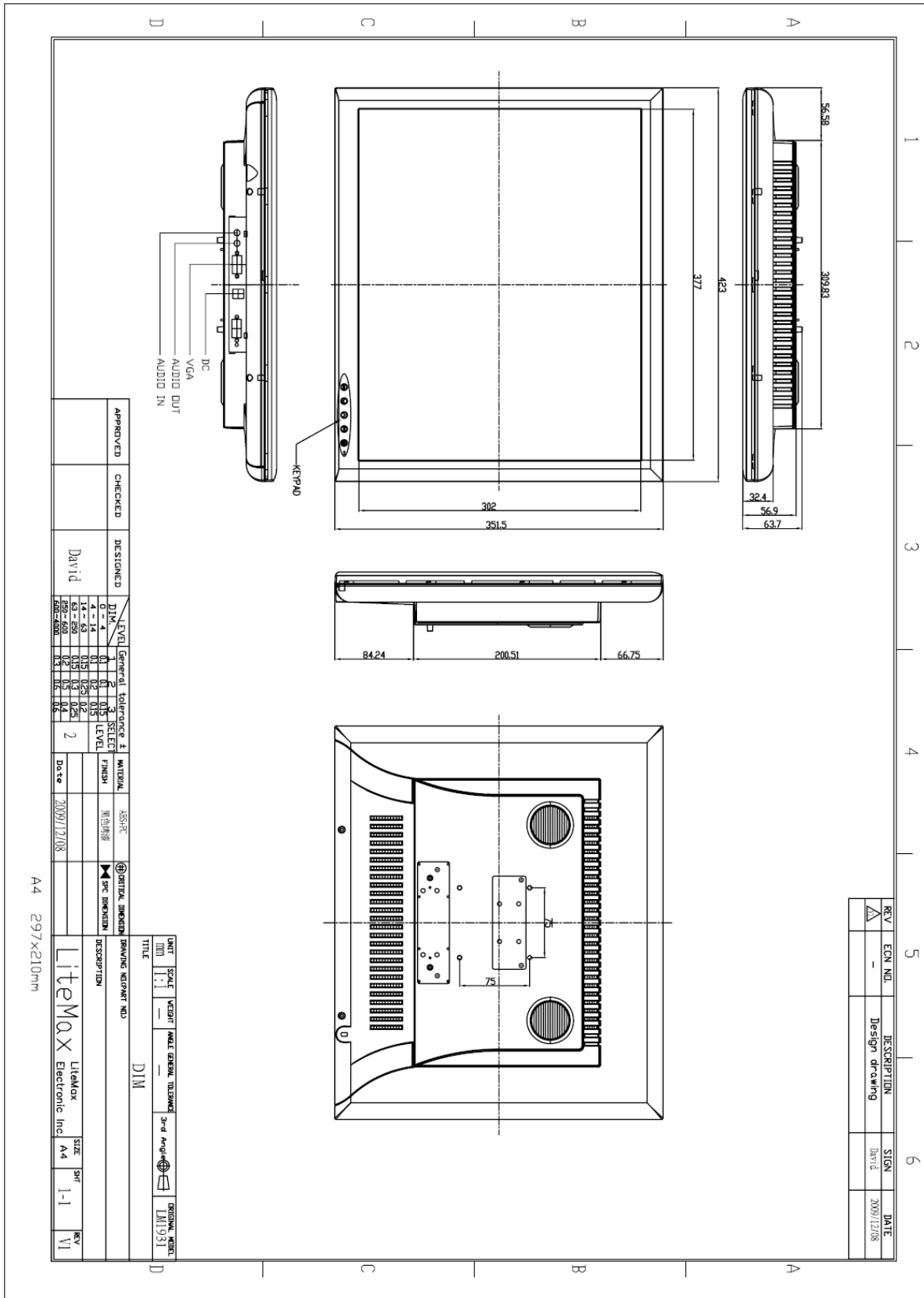
All brands or product names are trademarks or registered trademarks of their respective companies.



Mechanical Drawing

Outline Dimensions

Unit:mm





Ordering Information

Part Number	Description
SLM1931-SNA-A01	19", 250nits, AD5621GA, black, v01
SLM1931-SNA-A02	19", 250nits, SXGA, O/F.VGA, black, v02
SLM1931-SNA-A03	19",250nits,SXGA,O/F,AD5621G.no stand,GEA,v01
SLM1931-STA-A01	19", 250nits, T/LY-R-5W-RS232, black, AD5621GA, v01
SLM1931-STA-A02	19", 250nits, T/LY-R-5W-USB, black, AD5621GA, v01
SLM1931-STA-A03	19", 250nits, SXGA.T/LY-R-5W-RS232, O/F.VGA, black, v02
SLM1931-STA-A04	19", 250nits, SXGA.T/LY-R-5W-USB, O/F.VGA, black, v02
SLM1931-STA-A05	19",250nits,SXGA.T/LY-R-5W-USB,O/F.AD5621GA,black,w/o stand,V01

Optional Accessories

Part Number	Description
840612051103	ADAPTER,12V,5A,60W.KPA-060F,DC Plug,2.1*5.5mm.P
810618301010	CABLE.POWER.AC.1830mm USA type
810618301090	CABLE,POWER,AC,1830mm Europe type
810618301050	CABLE.POWER.AC.1830mm UK type
810618301170	CABLE.POWER,AC,1830mm Australia type
810618301030	CABLE.POWER.AC.1830mm Japan type